

# *Research and Sponsored Programs*

*at*

*East Tennessee State University*

## *Annual Report FY13*

*Prepared by  
The Office of Research and Sponsored Programs Administration*

<http://www.etsu.edu/research/AnnualReports/FY13/>

TBR No. 180-001-13 .005M



## Table of Contents

Section 1. Grant Proposals and Contracts Requested and Awarded FYs 1990 – 2013 .....	1
Total Sponsored Programs Activity, Bar Chart .....	3
Section 2. Grant Proposals and Contracts Requested by and Awarded to Divisions and Departments .....	3
ETSU Awards by Division, Pie Chart .....	7
Section 3. Grant Proposals and Contracts Requested from Sponsors (FY13).....	8
Requests by Agency Type, Pie Chart .....	10
Requests by Project Type, Pie Chart.....	11
Section 4. Grant Proposals and Contracts Awarded by Sponsors (FY13).....	12
Awards by Agency Type, Pie Chart .....	16
Awards by Project Type, Pie Chart.....	17
Section 5. Grants and Contracts Awarded by Division, Department and Primary Investigator.....	18
Office of Finance and Administration .....	18
Office of Academic Affairs .....	18
Center for Appalachian Studies and Services.....	19
Center for Community Outreach and Family Services.....	19
Center for Early Childhood Learning and Development.....	19
College of Arts and Sciences .....	20
College of Business and Technology.....	23
College of Clinical and Rehabilitative Health Sciences .....	24
College of Education.....	25
College of Medicine.....	26
College of Nursing.....	30
College of Pharmacy.....	31
College of Public Health.....	32

## Considerations:

- Grant proposals submitted in one fiscal year are not always awarded in the same fiscal year. Therefore direct comparisons should not be made between the number of proposals submitted and the number of awards received in a given fiscal year, nor the amount requested and the amount received.
- Some of the awards listed as State-funded also have Federal money as part of the total award. For these particular awards, each is specified under State with the State's dollar amount; the portion of the amount flowing through the State from a Federal agency is included in the lump sum amount listed as "Federal flow-through" under Federal.

## Acronyms used in this report:

Admin = Administrative offices

Centers = Centers of Excellence

CAS = College of Arts and Sciences

CAST = College of Applied Science and Technology (merged with COB in FY 03)

CCRHS = College of Clinical and Rehabilitative Health Sciences (formed in FY08)

COB = College of Business (merged with CAST in FY 03)

COBT = College of Business and Technology (combined CAST and COB in FY 03)

COE = College of Education

COM = College of Medicine

CON = College of Nursing

COP = College of Pharmacy

CPAH = College of Public and Allied Health (divided into CPH and CCRHS in FY08)

CPH = College of Public Health (formed in FY08)

SCS = School of Continuing Studies

ORCH = Office of Rural and Community Health

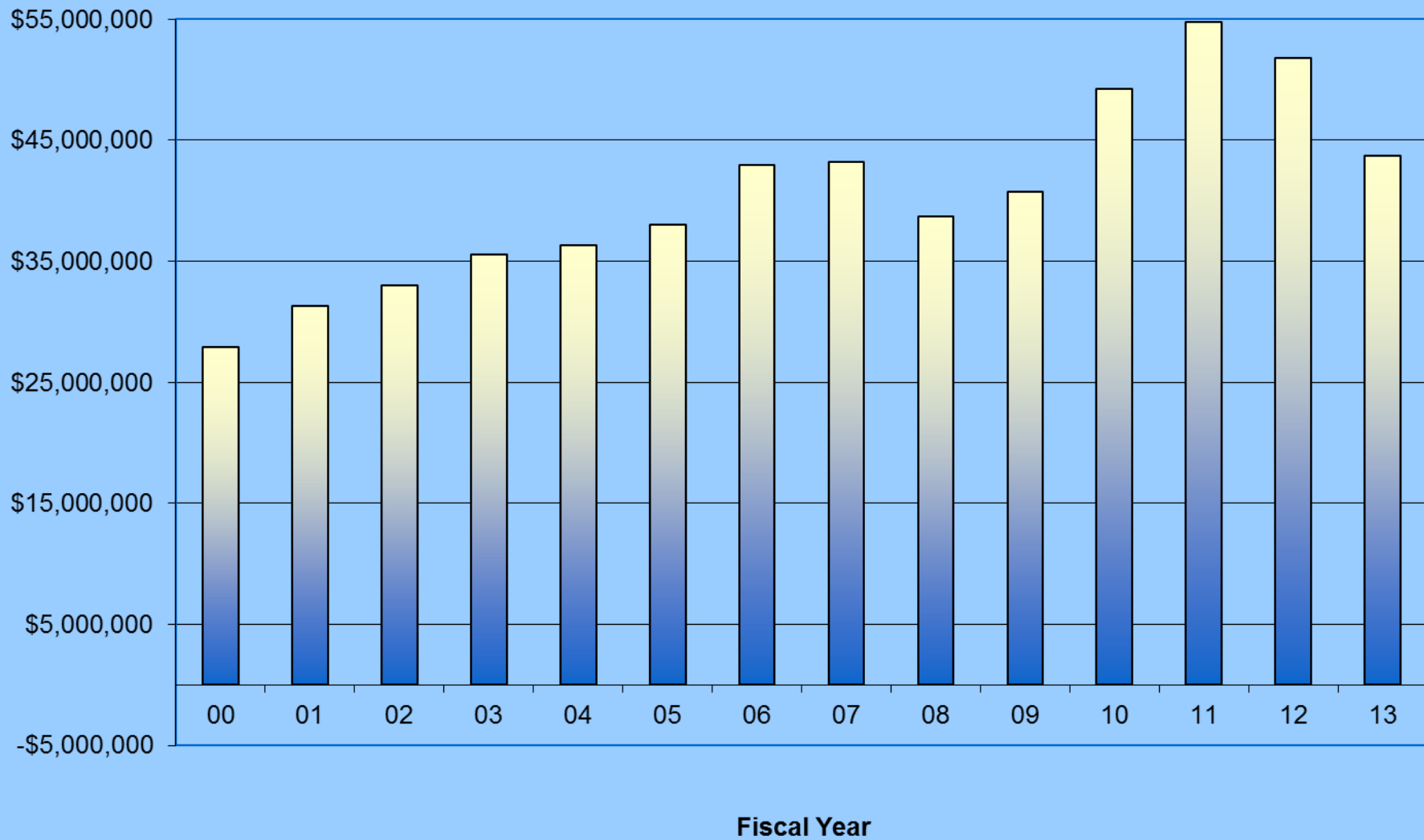
TN = Tennessee

Section 1. Grant Proposals and Contracts Requested and Awarded FYs 1990 – 2013.

<b>Fiscal Year</b>	<b>Number Submitted</b>	<b>Total Requested</b>	<b>Number Awarded</b>	<b>Total Federal Funds Awarded</b>	<b>Total Awarded</b>
1990	212	\$25,891,621	129	\$3,144,690	\$6,690,853
1991	213	33,696,476	116	2,628,324	6,405,469
1992	225	28,257,347	132	3,489,209	10,885,943
1993	232	28,207,416	164	4,416,674	13,482,064
1994	241	34,586,980	124	2,461,238	8,797,076
1995	248	46,857,741	144	4,044,382	12,005,537
1996	265	52,131,589	189	4,243,248	13,323,465
1997	307	46,245,449	172	4,734,609	13,985,241
1998	321	60,495,224	187	6,155,361	20,596,210
1999	287	47,008,532	187	6,877,435	22,164,122
2000	276	51,018,819	176	8,304,272	27,912,726
2001	275	52,169,601	193	9,351,126	31,300,521
2002	300	86,788,650	181	10,778,425	32,975,663
2003	291	87,316,579	159	11,468,714	35,546,106
2004	308	71,425,332	175	12,422,446	36,333,065
2005	318	70,107,108	198	13,259,147	38,003,277*
2006	348	74,365,922	226	27,482,414	42,975,074
2007	335	150,862,801	257	18,469,946	43,166,261
2008	335	75,335,784	298	18,942,484	39,691,883
2009	324	102,533,416	268	13,812,509	40,701,308
2010	314	105,165,783	227	25,340,273	49,219,792
2011	282	85,087,381	267	39,512,605	54,808,372
2012	279	96,934,537	230	36,111,256	51,760,956
2013	250	91,449,759	211	28,709,316	43,729,537

\*Includes amount awarded to the ETSU Research Foundation.

## ETSU Total Sponsored Programs Activity



## Section 2. Grant Proposals and Contracts Requested by and Awarded to Divisions and Departments

	Requests		Awards			
	Amount	No.	Continuations Amount	No.	New Amount	No.
<b>OFFICE OF THE PRESIDENT</b>						
Athletics						
President's Office						
University Relations						
<b>Subtotals</b>	<b>\$0</b>	<b>0</b>	<b>\$0</b>	<b>0</b>	<b>\$0</b>	<b>0</b>
<b>Total Continuations and New</b>					<b>\$0</b>	<b>0</b>
<b>UNIVERSITY ADVANCEMENT</b>						
WETS-FM						
<b>Subtotals</b>	<b>\$0</b>	<b>0</b>	<b>\$0</b>	<b>0</b>	<b>\$0</b>	<b>0</b>
<b>Total Continuations and New</b>					<b>\$0</b>	<b>0</b>
<b>OFFICE OF STUDENT AFFAIRS</b>						
Counseling Center						
Disability Services						
Housing and Residence Life						
Student Life & Leadership						
Student Organization Resource Center						
<b>Subtotals</b>	<b>\$0</b>	<b>0</b>	<b>\$0</b>	<b>0</b>	<b>\$0</b>	<b>0</b>
<b>Total Continuations and New</b>					<b>\$0</b>	<b>0</b>
<b>OFFICE OF FINANCE &amp; ADMINISTRATION</b>						
Facilities Mgmt., Planning and Construction	\$0	1				
Information Technology						
Public Safety	\$28,060	4			\$21,563	3
<b>Subtotals</b>	<b>\$28,060</b>	<b>5</b>	<b>\$0</b>	<b>0</b>	<b>\$21,563</b>	<b>3</b>
<b>Total Continuations and New</b>					<b>\$21,563</b>	<b>3</b>
<b>OFFICE OF ACADEMIC AFFAIRS</b>						
Office of Research & Sponsored Programs	\$0	1	\$17,566	3	\$10,850	1
Office of the Registrar						
Library Administration						
Enrollment Services, TRIO Programs	\$3,840,103	4	\$780,109	3	\$1,732,562	7
School of Graduate Studies	\$40,000	1				
Undergraduate Student Advisement						
<b>Subtotals</b>	<b>\$3,880,103</b>	<b>6</b>	<b>\$797,675</b>	<b>6</b>	<b>\$1,743,412</b>	<b>8</b>
<b>Total Continuations and New</b>					<b>\$2,541,087</b>	<b>14</b>

**CENTERS**

Center for Appalachian Studies & Services	\$541,872	4			\$479,153	3
Center for Early Childhood Learning & Devel.	\$1,374,263	8	\$165,573	2	\$1,168,179	6
Center for Community Outreach & Family Svcs.	\$6,514,972	4	\$8,542,805	1	\$551,773	2
<b>Subtotals</b>	<b>\$8,431,107</b>	<b>16</b>	<b>\$8,708,378</b>	<b>3</b>	<b>\$2,199,105</b>	<b>11</b>
<b>Total Continuations and New</b>					<b>\$10,907,483</b>	<b>14</b>

**COLLEGE OF ARTS & SCIENCES**

Dean's Office	\$9,000	1	\$499,841	1	\$15,500	2
Art & Design						
Biological Sciences	\$871,135	14	\$464,147	6	\$368,115	6
Chemistry	\$512,616	3			\$199,914	1
Communication						
Criminal Justice & Criminology	\$0	1				
Geosciences	\$657,860	2	\$153,333	1	\$32,700	2
History						
Literature and Language	\$102,598	4			\$12,000	2
Mathematics and Statistics	\$3,414,602	4	\$195,041	1	\$86,660	1
Music						
NHM & Fossil Site						
Philosophy and Humanities	\$299,720	1	\$88,178	1		
Physics and Astronomy	\$733,156	22	\$187,457	4	\$19,283	2
Political Science						
Psychology	\$6,127,234	9	\$285,194	5	\$139,872	7
Social Work	\$39,747	1	\$753,031	1	\$39,455	1
Sociology & Anthropology	\$531,190	4	\$40,000	1	\$30,569	2
<b>Subtotals</b>	<b>\$13,298,858</b>	<b>66</b>	<b>\$2,666,222</b>	<b>21</b>	<b>\$1,005,568</b>	<b>27</b>
<b>Total Continuations and New</b>					<b>\$3,671,790</b>	<b>48</b>

**COLLEGE OF BUSINESS & TECHNOLOGY**

Dean's Office	\$60,000	1			\$60,000	1
Bureau of Business & Economic Research	\$94,500	2	\$104,167	1		
Center for Banking						
Computer & Information Sciences						
Economics, Finance & Urban Studies						
Engineering, Tech., Surveying & Digital Media	\$373,536	4	\$79,585	2	\$83,656	3
Family & Consumer Sciences						
Management & Marketing						
Small Business Development Center					\$226,009	1
<b>Subtotals</b>	<b>\$528,036</b>	<b>7</b>	<b>\$183,752</b>	<b>3</b>	<b>\$369,665</b>	<b>5</b>
<b>Total Continuations and New</b>					<b>\$553,417</b>	<b>8</b>



**COLLEGE OF CLINICAL AND REHABILITATIVE HEALTH SERVICES**

Dean's Office						
Allied Health Sciences	\$71,030	3				
Audiology and Speech-Language Pathology	\$11,000	3	\$75,953	1	\$110,587	4
Physical Therapy	\$392,566	2	\$8,000	1	\$11,011	1
<b>Subtotals</b>	<b>\$474,596</b>	<b>8</b>	<b>\$83,953</b>	<b>2</b>	<b>\$121,598</b>	<b>5</b>
<b>Total Continuations and New</b>					<b>\$205,551</b>	<b>7</b>

**COLLEGE OF EDUCATION**

Dean's Office						
Curriculum & Instruction	\$3,000	1	\$6,000	1	\$202,217	2
Educational Leadership and Policy Analysis						
Teaching and Learning.(formerly Human Development and Learning)	\$1,399,320	7			\$642,144	6
Counseling and Human Services						
Kinesiology Sport and Recreation Management (Formerly KLSS)	\$16,000	2			\$44,400	6
Exercise and Sport Science						
Center of Excellence for Math and Science Education	\$414,125	3			\$771,237	4
University School						
<b>Subtotals</b>	<b>\$1,832,445</b>	<b>13</b>	<b>\$6,000</b>	<b>1</b>	<b>\$1,659,998</b>	<b>18</b>
<b>Total Continuations and New</b>					<b>\$1,665,998</b>	<b>19</b>

**COLLEGE OF MEDICINE**

Dean's Office	\$8,357,100	2	\$16,070	1	\$8,467,100	2
Academic Affairs						
Biomedical Sciences (formerly Anatomy, Biochemistry, Microbiology, Pharmacology, and Physiology)	\$14,285,529	25	\$1,064,057	7	\$591,077	10
Continuing Medical Education	\$92,350	1			\$92,350	1
Cultural Affairs						
Family Medicine	\$167,380	6	\$1,211,693	5	\$99,974	4
Geriatrics & Gerontology	\$458,000	2			\$20,000	1
Government Relations						
Internal Medicine	\$8,405,115	15	\$675,250	4	\$591,965	4
Laboratory Animals Resources						
Learning Resources	\$60,790	4			\$10,790	3
Obstetrics & Gynecology	91,000	1			\$91,000	1
Pathology	\$1,470,607	5			\$566,862	3
Pediatrics	\$1,657,216	4	\$20,500	1	\$1,337,571	2
Psychiatry & Behavioral Sciences	\$624,288	3	\$578,833	3	\$169,500	2
Student Affairs						
Surgery	\$10,602,872	7	\$877,030	4	\$411,904	1
<b>Subtotals</b>	<b>\$46,272,247</b>	<b>75</b>	<b>\$4,443,433</b>	<b>25</b>	<b>\$12,388,593</b>	<b>33</b>
<b>Total Continuations and New</b>					<b>\$16,832,026</b>	<b>58</b>

**COLLEGE OF NURSING**

Dean's Office	\$1,320,063	4	\$47,500	1	\$15,000	1
Center for Nursing Research	\$684,111	1			\$134,669	1
Graduate Programs	\$1,059,870	4	\$987,159	4	\$241,918	5
Office of Practice	\$3,221,912	8	\$2,997,607	3	\$299,253	4
<b>Subtotals</b>	<b>\$6,285,956</b>	<b>17</b>	<b>\$4,032,266</b>	<b>8</b>	<b>\$690,840</b>	<b>11</b>
<b>Total Continuations and New</b>					<b>\$4,723,106</b>	<b>19</b>

**COLLEGE OF PHARMACY**

Dean's Office						
Pharmaceutical Sciences	\$81,320	4			\$32,694	2
Pharmacy Practice	\$324,498	2			\$324,498	2
<b>Subtotals</b>	<b>\$405,818</b>	<b>6</b>	<b>\$0</b>	<b>0</b>	<b>\$357,192</b>	<b>4</b>
<b>Total Continuations and New</b>					<b>\$357,192</b>	<b>4</b>

**COLLEGE OF PUBLIC HEALTH**

Dean's Office	\$2,641,879	6	\$680,000	2	\$506,589	3
Biostatistics and Epidemiology	\$428,535	2				
Community and Behavioral Health	\$2,313,068	5	\$829,928	3	\$110,106	2
Environmental Health	\$366,103	5			\$31,115	3
Health Sciences	\$857,512	5	\$10,725	1		
Health Services Management and Policy	\$3,345,434	7			\$21,863	2
<b>Subtotals</b>	<b>\$9,952,531</b>	<b>30</b>	<b>\$1,520,653</b>	<b>6</b>	<b>\$669,673</b>	<b>10</b>
<b>Total Continuations and New</b>					<b>\$2,190,326</b>	<b>16</b>

**SCHOOL OF CONTINUING STUDIES AND ACADEMIC OUTREACH**

<b>Subtotals</b>	<b>\$0</b>	<b>0</b>	<b>\$0</b>	<b>0</b>	<b>\$0</b>	<b>0</b>
<b>Total Continuations and New</b>					<b>\$0</b>	<b>0</b>

**OFFICE OF RURAL & COMMUNITY HEALTH**

Academic Affairs						
Health Sciences	\$60,000	1			\$60,000	1
<b>Subtotals</b>	<b>\$60,000</b>	<b>1</b>	<b>\$0</b>	<b>0</b>	<b>\$60,000</b>	<b>1</b>
<b>Total Continuations and New</b>					<b>\$60,000</b>	<b>1</b>

**HONORS COLLEGE**

<b>Subtotals</b>	<b>\$0</b>	<b>0</b>	<b>\$0</b>	<b>0</b>	<b>\$0</b>	<b>0</b>
<b>Total Continuations and New</b>					<b>\$0</b>	<b>0</b>

**SUBTOTAL**

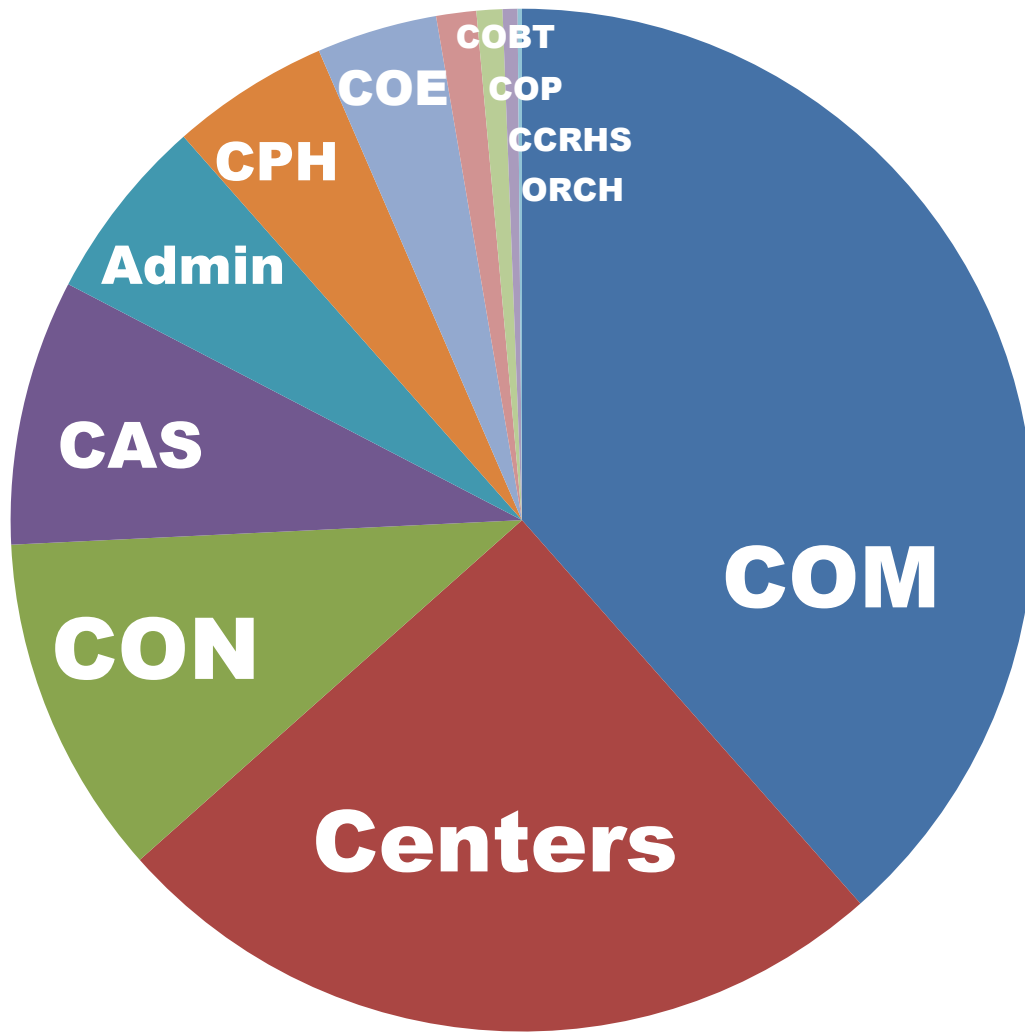
<b>\$22,442,332</b>	<b>75</b>	<b>\$21,287,207</b>	<b>136</b>
---------------------	-----------	---------------------	------------

**GRAND TOTALS**

<b>\$91,449,757</b>	<b>250</b>	<b>\$43,729,539</b>	<b>211</b>
---------------------	------------	---------------------	------------

# *ETSU Awards, FY13*

**\$43,729,539**



<i>College of Medicine</i>	<i>\$16,893,526</i>	<i>38.63%</i>	<i>College of Education</i>	<i>\$1,665,998</i>	<i>3.81%</i>
<i>Centers</i>	<i>\$10,907,483</i>	<i>24.94%</i>	<i>College of Business and Technology</i>	<i>\$553,417</i>	<i>1.27%</i>
<i>College of Nursing</i>	<i>\$4,723,106</i>	<i>10.80%</i>	<i>College of Pharmacy</i>	<i>\$357,192</i>	<i>0.82%</i>
<i>College of Arts and Sciences</i>	<i>\$3,610,290</i>	<i>8.26%</i>	<i>College of Clinical and Rehabilitative Health Sciences</i>	<i>\$205,551</i>	<i>0.47%</i>
<i>Administrative Offices of Academic Affairs and Finance and Administration</i>	<i>\$2,562,650</i>	<i>5.86%</i>	<i>Office of Rural and Community Health</i>	<i>60,000</i>	<i>0.14%</i>
<i>College of Public Health</i>	<i>\$2,190,326</i>	<i>5.01%</i>			

### Section 3. Grant Proposals and Contracts Requested from Sponsors (FY13)

**FEDERAL** Total Requested: \$60,883,964

<u>Funding Agency</u>	<u>No.</u>	<u>Amount Requested</u>	<u>Funding Agency</u>	<u>No.</u>	<u>Amount Requested</u>
National Institutes of Health	47	\$43,324,916	National Aeronautics and Space Administration	21	\$171,413
U.S. Department of Education	5	\$5,633,253	Appalachian Regional Commission	1	\$100,265
National Science Foundation	14	\$5,529,695	National Endowment for the Arts	1	\$62,176
Health Resources and Services Administration	6	\$4,215,862	Bureau of Primary Health Care	1	\$60,000
Veterans Affairs Medical Center	6	\$806,767	Tennessee Valley Authority	1	\$39,000
U.S. Department of Energy	1	\$411,616	U.S. Department of Agriculture	1	\$37,773
National Endowment for the Humanities	1	\$299,720	United States Dept of Justice	2	\$8,060
U.S. Environmental Protection Agency	1	\$180,448	National Park Service and Overmountain Victory Trail Association	1	\$3,000

**STATE** Total Requested: \$18,840,107

<u>Funding Agency</u>	<u>No.</u>	<u>Amount Requested</u>	<u>Funding Agency</u>	<u>No.</u>	<u>Amount Requested</u>
TN Bureau of TennCare	2	\$8,324,388	TN Wildlife Resources Agency	3	\$59,925
TN Department of Human Services	1	\$6,058,500	Tennessee, State of	1	\$32,000
TN Department of Education	7	\$1,479,763	TN State University	1	\$25,000
TN Department of Health	7	\$1,053,757	TN Governor's Highway Safety Office	2	\$20,000
TN Higher Education Commission	3	\$533,000	TN Arts Commission	1	\$9,000
TN Department of Transportation	2	\$498,508	University of Tennessee at Knoxville	1	\$7,500
TN Board of Regents	6	\$379,545	TN Supreme Court Administrative Office of the Courts	1	\$3,300
TN Department of Environment and Conservation	2	\$295,921			
University of Tennessee Center for Industrial Services	1	\$60,000			

**INDUSTRY** Total Requested: \$1,576,586

<u>Funding Agency</u>	<u>No.</u>	<u>Amount Requested</u>	<u>Funding Agency</u>	<u>No.</u>	<u>Amount Requested</u>
Cyberonics, Inc.	2	\$938,277	Clinical Management Concepts	1	\$29,877
Mountain States Health Alliance	5	\$562,685	Bristol Regional Speech and Hearing Center	1	\$3,000
Tennessee Opportunity Programs, Inc.	1	\$39,747	Watauga Hearing Conservation, Inc.	1	\$3,000

**FOUNDATIONS AND ASSOCIATIONS**

Total Requested: \$1,809,111

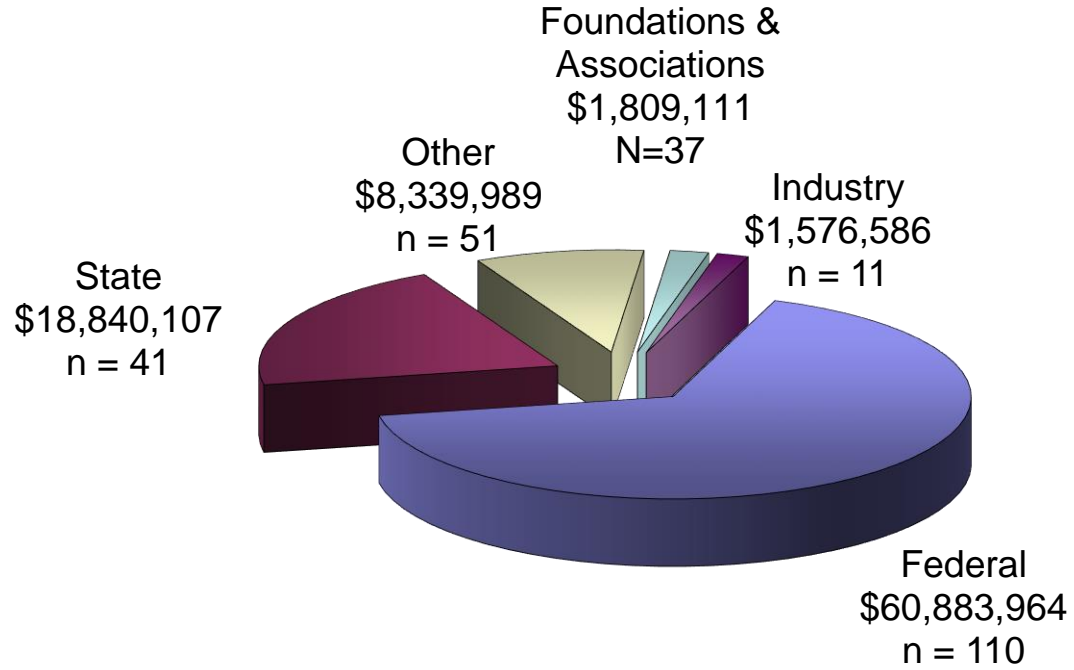
<b>Funding Agency</b>	<b>No.</b>	<b>Amount Requested</b>	<b>Funding Agency</b>	<b>No.</b>	<b>Amount Requested</b>
American Diabetes Association	1	\$397,279	Nature Conservancy, The	1	\$24,500
American Heart Association - Greater Southeast Affiliate	2	\$330,000	American Association of Colleges of Pharmacy	2	\$20,000
Alpha Foundation	1	\$154,540	Association of American Colleges & Universities	2	\$17,598
American Heart Association - National	1	\$142,122	First Tennessee Human Resource Agency	1	\$17,000
ETSU Research Foundation	2	\$124,425	American Speech-Language-Hearing Association	1	\$14,780
John Templeton Foundation, The	1	\$117,015	University of Kentucky Research Foundation	1	\$10,155
Foundation Endowment, The	1	\$94,164	Robert Wood Johnson Foundation	1	\$10,000
Gustavus and Louise Pfeiffer Research Foundation	2	\$61,320	American Academy of Family Physicians	1	\$7,500
National Network of Libraries of Medicine	4	\$60,790	Arnold P Gold Foundation	1	\$4,000
Gladys Brooks Foundation	1	\$60,484	March of Dimes	1	\$2,494
Alternatives Research and Development Foundation	1	\$40,000	Appalachian Farmers Market Association	1	\$250
Council of Graduate Schools	1	\$40,000	Blue Cross Blue Shield of Tennessee Health Foundation	1	\$0
Foundation of the National Student Nurses Association.	2	\$30,000			
Autism Speaks	3	\$28,695			

**OTHER**

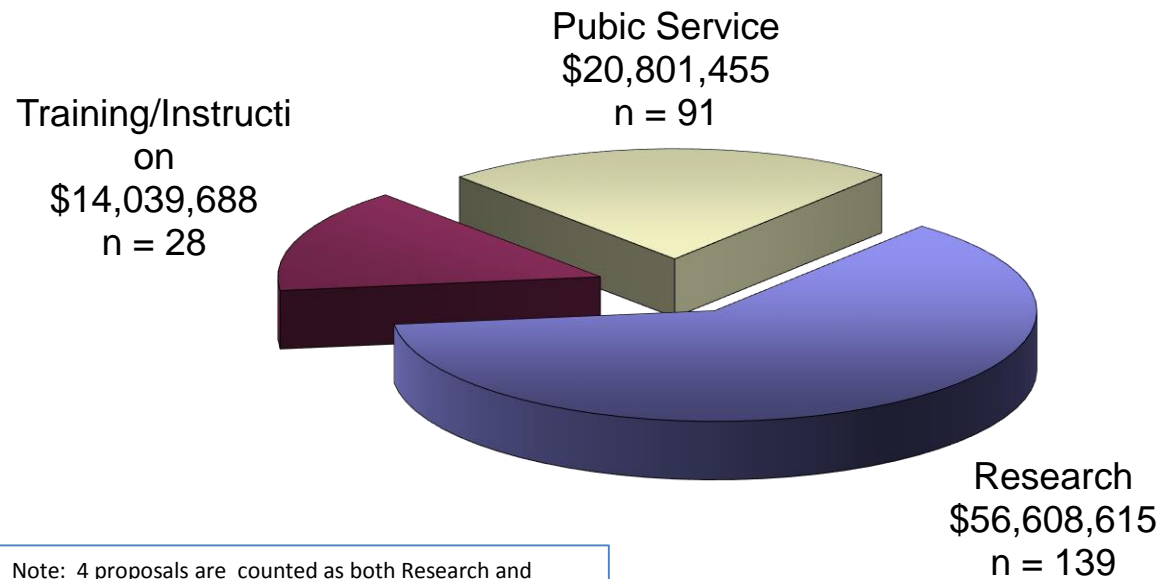
Total Requested: \$8,339,989

<b>Funding Agency</b>	<b>No.</b>	<b>Amount Requested</b>	<b>Funding Agency</b>	<b>No.</b>	<b>Amount Requested</b>
Pennsylvania State University	2	\$2,713,227	International Society for Clinical Densitometry	1	\$20,000
Medical Education Assistance Corporation	8	\$2,458,237	Washington County, TN	1	\$19,097
Upper East Tennessee Counties	2	\$931,490	Neurodetective, Inc.	1	\$17,000
Alliance for Business and Training	2	\$396,472	National Institute for Computational Sciences	1	\$16,000
Johns Hopkins University	1	\$370,544	East Tennessee Human Resources Agency	1	\$14,500
Public Health Accrediation Board	1	\$324,946	West Virginia Research Corporation	1	\$10,000
Binational Agricultural Research and Development Fund	1	\$144,000	Jonesborough, TN, Town of	1	\$8,418
Washington County Department of Education	2	\$103,533	Southern Region Sustainable Agriculture Research and Education Program (SARE) / US Department of Agruculture, National Institute of Food and Agriculture	1	\$6,479
Center for Medicare and Medicaid Services	1	\$100,041	Healing Hands Health Center	1	\$6,030
National Networks of Public Health Institutes	2	\$93,439	Heal Appalachia	1	\$5,000
Various Sponsors	1	\$92,350	Appalachian Trail Conservancy - North Carolina	2	\$4,200
North Atlantice Treaty Organization	1	\$85,000	Trout Unlimited	1	\$3,600
Launch Tennessee	1	\$62,500	California State Polytechnic University	1	\$3,040
Joint Unicoi County Economic Development Board	1	\$60,000	International Association for Laboratory Schools	1	\$2,000
Sevier County, TN	1	\$60,000	Keep America Beautiful	1	\$0
Plural Publishing	1	\$49,891	University of Michigan	1	\$0
Attainment Company, Inc.	1	\$44,238			
Johnson City, TN, City of	2	\$34,069			
Arizona State University	1	\$30,029			
Georgia State University	1	\$27,035			
Louisville Institute	1	\$23,584			

# FY13 Requests by Agency Type



# FY13 Requests by Project Type



Note: 4 proposals are counted as both Research and Public Service; 4 others are counted as both Public Service and Training; their amounts are equally divided between

## Section 4. Grant Proposals and Contracts Awarded by Sponsors (FY13)

### FEDERAL Total Awarded: \$28,807,738

Funding Agency	Continuations		New		Subtotal	
	Amount	No.	Amount	No.	Amount	No.
Health Resources and Services Administration	\$4,956,037	9	\$25,682	2	\$4,981,719	11
National Institutes of Health	\$3,128,839	14	\$602,172	3	\$3,731,011	17
U.S. Department of Education	\$950,632	5	\$1,714,839	6	\$2,665,471	11
National Science Foundation	\$1,296,082	9	\$230,142	3	\$1,526,224	12
Veterans Affairs Medical Center	\$18,000	2	\$236,316	6	\$254,316	8
National Oceanic and Atmospheric Administration	\$153,333	1			\$153,333	1
Appalachian Regional Commission			\$98,422	1	\$98,422	1
U.S. Department of Defense			\$90,462	1	\$90,462	1
National Endowment for the Humanities	\$88,178	1			\$88,178	1
Tennessee Valley Authority			\$39,040	1	\$39,040	1
U.S. Department of Agriculture			\$17,723	1	\$17,723	1
National Aeronautics and Space Administration			\$9,283	1	\$9,283	1
National Park Service and Overmountain Victory Trail Association	\$6,000	1			\$6,000	1
U.S. Department of Justice			\$1,563	1	\$1,563	1
Federal Flow-Through	\$7,204,170	6	\$7,940,823	23	\$15,144,993	

### STATE Total Awarded: \$8,802,742

Funding Agency	Continuations		New		Subtotal	
	Amount	No.	Amount	No.	Amount	No.
TN Bureau of TennCare	\$227,394	1	\$2,834,784	1	\$3,062,178	2
TN Department of Human Services	\$2,135,701	1	\$219,291	1	\$2,354,992	2
Middle Tennessee State University	\$753,031	1	\$226,009	1	\$979,040	2
TN Department of Health	\$68,000	2	\$801,688	9	\$869,688	11
TN Department of Education	\$0	1	\$520,961	12	\$520,961	13
TN Higher Education Commission			\$460,800	7	\$460,800	7
TN State University			\$244,000	2	\$244,000	2
University of Tennessee Center for Industrial Services			\$60,000	1	\$60,000	1
University of Tennessee at Knoxville	\$49,707	2			\$49,707	2
TN Department of Transportation	\$8,000	1	\$40,000	1	\$48,000	2
TN Tech University	\$40,000	1			\$40,000	1
TN Board of Regents	\$39,585	1			\$39,585	1
TN Department of Mental Health	\$0	1	\$35,241	1	\$35,241	2
TN Wildlife Resources Agency			\$26,750	2	\$26,750	2
TN Arts Commission			\$9,000	1	\$9,000	1
TN Department of Environment and Conservation			\$2,800	2	\$2,800	2
TN Governor's Highway Safety Office			\$0	2	\$0	2
State of Tennessee	\$0	1			\$0	1
TN Council on Developmental Disabilities			\$0	1	\$0	1



**INDUSTRY**

Total Awarded: \$1,082,122

Funding Agency	Continuations		New		Subtotal	
	Amount	No.	Amount	No.	Amount	No.
Mountain States Health Alliance			\$436,871	8	\$436,871	8
Cyberonics, Inc.	\$204,122	1	\$191,128	2	\$395,250	3
Soterion Health Care Group, LLC	\$90,536	1			\$90,536	1
Frontier Health, Inc.			\$50,471	3	\$50,471	3
Tennessee Opportunity Programs, Inc.			\$39,455	1	\$39,455	1
Clinical Management Concepts, Inc.			\$29,877	1	\$29,877	1
Cherokee Health Systems			\$20,000	1	\$20,000	1
Health Research, Inc.	\$13,663	1			\$13,663	1
Bristol Regional Speech and Hearing Center			\$3,000	1	\$3,000	1
Watauga Hearing Conservation, Inc.			\$3,000	1	\$3,000	1

**FOUNDATIONS AND ASSOCIATIONS**

Total Awarded: \$827,615

Funding Agency	Continuations		New		Subtotal	
	Amount	No.	Amount	No.	Amount	No.
Battelle Memorial Institute			\$261,927	1	\$261,927	1
University of Kentucky Research Foundation	\$101,380	1	\$10,155	1	\$111,535	2
Foundation Endowment, The			\$94,164	1	\$94,164	1
ETSU Research Foundation			\$91,300	1	\$91,300	1
American Heart Association - National	\$77,000	1			\$77,000	1
American Psychological Foundation			\$49,953	1	\$49,953	1
National Association of County and City Health Officials	\$30,000	1			\$30,000	1
Nature Conservancy, The			\$24,500	1	\$24,500	1
First Tennessee Human Resource Agency			\$17,000	1	\$17,000	1
Foundation of the National Student Nurses Association			\$15,000	1	\$15,000	1
American Heart Association - Greater Southeast Affiliate	\$13,500	1			\$13,500	1
Robert Wood Johnson Foundation			\$11,708	1	\$11,708	1
National Network of Libraries of Medicine			\$10,790	3	\$10,790	3
American Association of Colleges of Pharmacy			\$9,994	1	\$9,994	1
New England Foundation for the Arts			\$6,500	1	\$6,500	1
March of Dimes			\$2,494	1	\$2,494	1
Appalachian Farmers Market Association			\$250	1	\$250	1

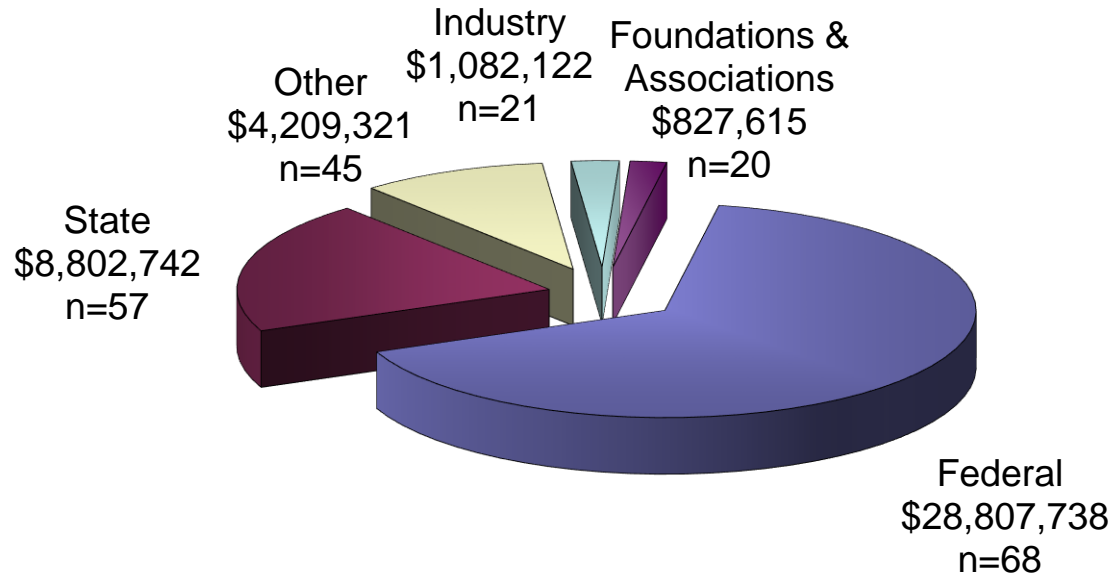
## OTHER

Total Awarded: \$4,209,321

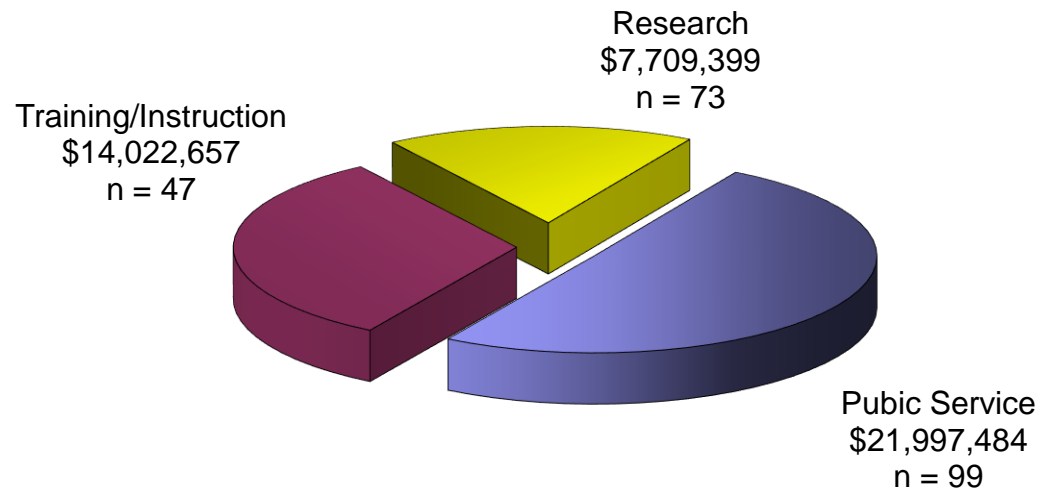
Funding Agency	Continuations		New		Subtotal	
	Amount	No.	Amount	No.	Amount	No.
Medical Education Assistance Corporation	\$293,547	3	\$1,995,237	8	\$2,288,784	11
Upper East Tennessee Counties			\$465,745	1	\$465,745	1
Alliance for Business and Training			\$224,473	1	\$224,473	1
Duke University	\$206,530	1			\$206,530	1
University of Massachusetts			\$109,856	1	\$109,856	1
Launch Tennessee	\$104,167	1			\$104,167	1
Washington County Department of Education			\$103,533	2	\$103,533	2
Various Sponsors	\$850	1	\$92,350	1	\$93,200	2
Michael J. Fox Foundation for Parkinson's Research, The			\$74,987	1	\$74,987	1
Sevier County, TN			\$60,000	1	\$60,000	1
University of Rhode Island	\$56,210	1			\$56,210	1
Johnson City, TN, City of			\$49,033	2	\$49,033	2
Community Health Network	\$49,000	1			\$49,000	1
Michal Child Development Center			\$46,112	1	\$46,112	1
Ithaca College	\$45,000	1			\$45,000	1
Attainment Company, The			\$44,238	1	\$44,238	1
National Networks of Public Health Institutes			\$28,500	1	\$28,500	1
United States Pharmacopeia			\$22,700	1	\$22,700	1
International Society for Clinical Densitometry			\$20,000	1	\$20,000	1
Washington County, TN			\$19,097	1	\$19,097	1
Neurodetective, Inc.			\$17,000	1	\$17,000	1
Stone Mountain Health	\$16,000	1			\$16,000	1
Vanderbilt University	\$4,037	1	\$10,000	1	\$14,037	2
Mountainview Pediatrics			\$10,500	1	\$10,500	1
West Virginia Research Corporation			\$10,000	1	\$10,000	1
Jonesborough, TN, Town of			\$8,418	1	\$8,418	1
University of Rochester	\$7,385	1			\$7,385	1
Eastern Kentucky University	\$6,716	1			\$6,716	1
Trout Unlimited			\$3,600	1	\$3,600	1
Appalachian Trail Conservancy - North Carolina			\$2,500	1	\$2,500	1
International Association for Laboratory Schools			\$2,000	1	\$2,000	1

*This page intentionally left blank.*

# FY13 Awards by Agency Type



# FY13 Awards by Project Type



Note: 1 award is counted as both Research and Public Service; 7 awards are counted as both Public Service and Training; their amounts are equally divided between the associated Project Types.

## Section 5. Grants and Contracts Awarded FY2013.

\* Denotes new award

### Office of Finance and Administration

#### Public Safety

##### **Mayberry, Jennifer**

TN Governor's Highway Safety Office, " <i>Law Enforcement Coordinator Grant 2012-2013</i> "	\$15,000	*
TN Governor's Highway Safety Office, " <i>High Visibility Law Enforcement Campaigns 2012-2013</i> "	\$5,000	*
U.S. Department of Justice, " <i>Bulletproof Vest Program</i> "	\$1,563	*

### Office of Academic Affairs

#### Office of Enrollment Services, TRIO Programs

##### **Gross, Ronnie**

U.S. Department of Education, " <i>ETSU Upward Bound - Johnson City</i> "	\$452,373	*
U.S. Department of Education, " <i>Student Support Services</i> "	\$292,340	
U.S. Department of Education, " <i>ETSU Veterans Upward Bound</i> "	\$260,466	*
U.S. Department of Education, " <i>Educational Talent Search</i> "	\$257,769	
U.S. Department of Education, " <i>ETSU Ronald McNair Postbaccalaureate Achievement</i> "	\$252,000	*
U.S. Department of Education, " <i>ETSU at Bristol Upward Bound</i> "	\$250,000	*
U.S. Department of Education, " <i>ETSU at Kingsport Upward Bound</i> "	\$250,000	*
U.S. Department of Education, " <i>ETSU Upward Bound Math Science</i> "	\$250,000	*
U.S. Department of Education, " <i>Educational Opportunity Center</i> "	\$230,000	
U.S. Department of Agriculture, " <i>Upward Bound Summer Food Program 2012</i> "	\$17,723	*

#### Office of Research and Sponsored Programs

##### **Duncan, William R.**

Veterans Affairs Medical Center, " <i>IRB Manager Services</i> "	\$10,000	
Various Sponsors, " <i>IRB Review Services</i> "	\$850	
Mountain States Health Alliance, " <i>To Provide IRB Services for MSHA</i> "	\$10,850	*
Eastern Kentucky University, " <i>Rural Domestic Preparedness Consortium</i> "	\$6,716	

#### Office of Rural and Community Health

##### **Counts, P. Scott**

Sevier County, TN, " <i>To Provide Health Professions Educational Opps in Sevier County</i> "	\$60,000	*
---	----------	---

## Centers

### Center for Appalachian Studies

#### **Herrin, Roberta**

TN Higher Education Commission, “ <i>Center of Excellence in Appalachian Studies 2012-2013</i> ”	\$283,600	*
Appalachian Regional Commission, “ <i>Appalachian Teaching Project 2013-2014</i> ”	\$98,422	*
TN Department of Education, “ <i>Governor's School for the Scientific Exploration of Tennessee Heritage 2013</i> ”	\$97,131	*

### Center for Community Outreach and Family Services

#### **Leger, Robert**

TN Department of Human Services, “ <i>Families First Zone E 2012-2013</i> ”	\$8,542,805	
Alliance for Business and Training, “ <i>WIA Youth Grant</i> ”	\$224,473	*
TN Department of Human Services, “ <i>Family Services Counseling 2012-2013</i> ”	\$327,300	*

### Center for Early Childhood Learning and Development

#### **Davis, Mindy**

TN State University, “ <i>TECTA -- Tennessee Early Childhood Training Alliance 2013</i> ”	\$219,000	*
TN State University, “ <i>Tennessee Early Childhood Training Alliance - ECAC Funding</i> ”	\$25,000	*

#### **Fox, James**

TN Department of Education, “ <i>Positive Behavior Support Initiative Project 2012-2015</i> ”	\$300,000	*
---	-----------	---

#### **Nelson, Donna**

TN Department of Education, “ <i>Early Intervention Project: Expanding Horizons 2012-2013</i> ”	\$366,979	*
---	-----------	---

#### **Ongie, Alissa**

TN Department of Education, “ <i>SIG: Preschool Literacy Training Project</i> ”	\$71,003	
---	----------	--

#### **Wheeler, John**

TN Higher Education Commission, “ <i>Center of Excellence in Early Childhood 2012-2013</i> ”	\$177,200	*
TN Department of Education, “ <i>TEIS: Technical Assistance</i> ”	\$80,000	*

#### **Wiginton, Beverly**

U.S. Department of Education, “ <i>CCAMPIS at Child Study Center and Little Bucs</i> ”	\$94,570	
--	----------	--

## College of Arts and Sciences

### Dean's Office

#### **Anderson, Gordon**

National Science Foundation, "*Renovation of Research Facilities in Brown Hall ETSU*" \$499,841

#### **DeAngelis, Anita**

TN Arts Commission, "*Fisk Jubilee Singers*" \$9,000 \*

New England Foundation for the Arts, "*National Dance Project: PHILADANCO*" \$6,500 \*

### Biological Sciences

#### **Alsop, Fred**

TN Wildlife Resources Agency, "*The Birds of Tennessee*" \$25,000 \*

TN Wildlife Resources Agency, "*Research on the Northern Saw-Whet Owl in the North Cherokee National Forest*" \$7,000 \*

Appalachian Trail Conservancy - North Carolina, "*Northern Saw-Whet Owl Study in the A.T. Corridor Along the Tennessee/North Carolina Line*" \$2,500 \*

#### **Jones, Thomas C.**

National Science Foundation, "*Spiders on the Clock: Ecological implications and Neurohormonal Underpinnings of Circadian Rhythm in Foraging and Antipredator Behavior*" \$135,282 \*

National Science Foundation, "*Exploring the Neogene Plant Record of Global Vegetational and Climatic Changes in Eastern North America*" \$83,900

#### **Kumar, Dhirendra**

National Science Foundation, "*RUI: Identification and Characterization of Cellular Effectors of SABP2, Its Subcellular Localization, and Role in Non-R-gene Mediated Disease Resistance in Plants*" \$59,917

#### **Levy, Foster**

TN Department of Environment and Conservation, "*Community Assessment and Floristic Survey of Doe Mountain, TN*" \$2,800 \*

#### **McDowell, Timothy**

TN Higher Education Commission, "*STEM-Incorporating Active Learning into Life Sciences Teaching*" \$195,533 \*

#### **McIntosh, Cecilia**

National Science Foundation, "*RUI: Function and Structural Characterization of Secondary Product Glucosyltransferase Clones from Citrus Paradisi*" \$117,327

#### **Moore, Darrell**

National Science Foundation, "*UBM Group: Collaborative Research on the Arthropod Way of Life: Interdisciplinary Training in Mathematical Biology*" \$77,000



<b>Pyles, Rebecca</b>	National Science Foundation, “ <i>REU Site: Undergraduate Research in Integrative Developmental Biology</i> ”	\$61,500	
<b>Yampolsky, Lev</b>	National Science Foundation, “ <i>Dimensions: Collaborative Research: Lake Baikal Responses to Global Change</i> ”	\$64,503	
<b><u>Chemistry</u></b>			
<b>Zhao, Ningfeng</b>	TN Higher Education Commission, “ <i>STEM PCMI: Professional Community of Modeling Instruction</i> ”	\$199,914	*
<b><u>Geosciences</u></b>			
<b>Gregg, Christopher</b>	National Oceanic and Atmospheric Administration, “ <i>Incorporating Social Science into NOAA's Tsunami Program</i> ”	\$153,333	
	Nature Conservancy, The, “ <i>Development of SOP and Ethical Guidelines for the Protection of Human Subjects in Exempt Research</i> ”	\$24,500	*
<b>Wallace, Steven</b>	National Science Foundation, “ <i>REU Supplement for Gray Fossil Site Research Grant</i> ”	\$8,200	*
<b><u>Literature and Language</u></b>			
<b>Nelson, Ardis</b>	TN Department of Health, “ <i>Interpretation/Translation Services 2012-2013</i> ”	\$12,000	*
	TN Department of Education, “ <i>Interpretation Services for TEIS 2012-2013</i> ”	\$0	*
<b><u>Mathematics and Statistics</u></b>			
<b>Godbole, Anant</b>	National Science Foundation, “ <i>Combinatorics and Probability</i> ”	\$86,660	*
<b>Knisley, Jeff</b>	National Science Foundation, “ <i>The Northeast Tennessee Robert Noyce Scholarship Program</i> ”	\$195,041	
<b><u>Philosophy and Humanities</u></b>			
<b>Kortum, Richard D.</b>	National Endowment for the Humanities, “ <i>Rock Art and Archaeology: Investigating Ritual Landscape in the Mongolian Altai</i> ”	\$88,178	
<b><u>Physics and Astronomy</u></b>			
<b>Hagelberg, Frank B.</b>	University of Tennessee at Knoxville, “ <i>Tennessee Solar Conversion and Storage</i> ”	\$38,982	

<b>Henson, Gary</b>		
Vanderbilt University, “ <i>Synoptic Observations of Variable Stars in the Northern and Southern Hemispheres: Visible Light Photometry and Polarimetry</i> ”	\$4,037	
<b>Ignace, Richard</b>		
National Science Foundation, “ <i>Collaborative Research: RUI: Tracing the Spectropolarimetric History of Circumstellar Structures from High-Mass Stars through Supernovae</i> ”	\$137,053	
National Aeronautics and Space Administration, “ <i>Wolf-Rayet Winds at High Spectral Resolution</i> ”	\$9,283	*
<b>Razskazovskiy, Yuriy</b>		
University of Rochester, “ <i>Solid State Radiation Chemistry of DNA</i> ”	\$7,385	
<b>Smith, Beverly</b>		
Vanderbilt University, “ <i>Student Attraction and Retention in Physics and Astronomy (SARPA) Scholarships</i> ”	\$10,000	*
<b><u>Psychology</u></b>		
<b>Brown, Russell</b>		
Neurodetective, Inc., “ <i>Effect of Compound A on Recovery from Cerebral Ischemia</i> ”	\$17,000	*
<b>Cantrell, Peggy</b>		
Cherokee Health Systems, “ <i>Clinical Affiliation with Cherokee Health Systems-GA Support 2012-2013</i> ”	\$20,000	*
First Tennessee Human Resource Agency, “ <i>Clinical Affiliation Agreement with First TN Human Resource Agency (FTHRA)</i> ”	\$17,000	*
Frontier Health, Inc., “ <i>Clinical Affiliation for GA Support 2012-2013</i> ”	\$12,000	*
Mountainview Pediatrics, “ <i>Clinical Affiliation Agreement for GA Support 2012-2013</i> ”	\$10,500	*
<b>Dixon, Wallace</b>		
National Institutes of Health, “ <i>International Conference on Infant Studies 2010-2014</i> ”	\$1	
<b>McBee, Matt</b>		
American Psychological Foundation, “ <i>Mediators of Insight Problem Solving in Gifted and Non-Gifted Students</i> ”	\$49,953	*
<b>Polaha, Jodi</b>		
Community Health Network, “ <i>Psychology Department Telehealth Program</i> ”	\$49,000	
Stone Mountain Health, “ <i>Psychology Workforce Development Project</i> ”	\$16,000	
National Institutes of Health, “ <i>ADMIN SUPPLEMENT for Parent Grant: Rural Parents' Perceived Stigma of Seeking Mental Health Services for their Children</i> ”	\$13,419	*

<b>Sellers, Eric W.</b>		
Duke University, <i>“Towards Clinical Acceptability: Enhancing Performance of the P300-Based Brain Computer Interface Via Improved Stimulus Selection and Signal Processing”</i>	\$206,530	
Health Research, Inc., <i>“General Purpose Brain-Computer Interface (BCI) System”</i>	\$13,663	

**Social Work**

<b>Dobbins, Dorothy</b>		
Tennessee Opportunity Programs, Inc., <i>“2012 ETSU Migrant Student Leadership Conference”</i>	\$39,455	*

<b>Smith, Michael</b>		
Middle Tennessee State University, <i>“Title IV-E Project 2012-2013”</i>	\$753,031	

**Sociology and Anthropology**

<b>Franklin, Jay</b>		
TN Department of Transportation, <i>“ETSU Curation of Archaeological Materials Generated from Tennessee Department of Transportation Highway Projects”</i>	\$40,000	

TN Department of Environment and Conservation, <i>“Archaeological Survey of Jim Creek, Pickett State Forest, Upper Cumberland Plateau, TN”</i>	\$11,500	*
--	----------	---

<b>McCallister, Leslie</b>		
Johnson City, TN, City of, <i>“Johnson City Targeted Community Crime Reducation Project”</i>	\$19,069	*

**College of Business and Technology**

**Dean’s Office**

<b>Hyder, Carroll</b>		
University of Tennessee Center for Industrial Services, <i>“Support for the Business and Industrial Assistance Program 2012-2013”</i>	\$60,000	*

**Bureau of Business and Economic Research**

<b>Smith, Jon</b>		
Launch Tennessee, <i>“Regional Entrepreneurial Accelerator Program within the Northeast Jobs4TN Region”</i>	\$104,167	

**Engineering, Technology, Surveying and Digital Media**

<b>Hemphill, William K.</b>		
TN Department of Transportation, <i>“Basic Aerospace Education Workshop 2013”</i>	\$40,000	*

<b>Johnson, Keith V.</b> TN Board of Regents, “ <i>Minority Faculty Recruitment Program - Phase III</i> ”	\$39,585	
<b>Sims, Joseph Paul</b> TN Tech University, “ <i>Industrial Assessment</i> ”	\$40,000	
<b>Uddin, Moin</b> Tennessee Valley Authority, “ <i>Energy Right Solutions for Higher Education</i> ”	\$39,040	*
<b>Vaglia, John</b> TN Department of Education, “ <i>Teacher Education Activities for Technology Engineering Education 2011-2012</i> ”	\$4,616	*
<b><u>Small Business Development Center</u></b>		
<b>Justice, Robert</b> Middle Tennessee State University, “ <i>TN Small Business Development Center 2013</i> ”	\$226,009	*

## College of Clinical and Rehabilitative Health Sciences

### **Audiology and Speech-Language Pathology (formerly Communicative Disorders)**

<b>Chase, Patricia</b> Bristol Regional Speech and Hearing Center, “ <i>Support for Audiology GA 2012-2013</i> ”	\$3,000	*
Watauga Hearing Conservation, Inc., “ <i>Support for Audiology GA 2012-2013</i> ”	\$3,000	*
<b>Louw, Brenda</b> TN Department of Education, “ <i>Institute in Speech-Language Pathology TN Teachers Cohort at ETSU</i> ”	\$104,587	*
U.S. Department of Education, “ <i>Consortium for Promoting Cross-Linguistic Understanding of Communication Disabilities in Children</i> ”	\$75,953	
TN Department of Education, “ <i>Tennessee Early Intervention System (TEIS) 2012-2013</i> ”	\$0	*

### **Physical Therapy**

<b>Arnall, David A.</b> Veterans Affairs Medical Center, “ <i>IPA Agreement for Mary Jo Davenport</i> ”	\$8,000	
<b>Davenport, Mary Jo</b> Veterans Affairs Medical Center, “ <i>IPA Mary Jo Davenport</i> ”	\$11,011	*

# College of Education

## Center of Excellence in Math & Science Education

### **Rhoton, Jack**

Battelle Memorial Institute, “Northeast STEM Academy and ETSU TSIN  
STEM Innovation Hub” \$261,927 \*

TN Department of Education, “Governor's School for Scientific Models and  
Data Analysis” \$89,314 \*

### **Tai, Chih-Che**

TN Department of Education, “Common Core Math Institutes: Reaching for  
Excellence in Elementary and Middle School Math” \$299,996 \*

TN Higher Education Commission, “Math Common Core Institute-Reaching  
for Excellence in High School Algebra -- ITQ” \$120,000 \*

## Curriculum and Instruction

### **Keith, Karin**

TN Higher Education Commission, “STEM-Integrating Hands-on Activities  
with Math and Reading Common Core Standards” \$199,437 \*

### **Lewis, Angela**

TN Department of Education, “Professional and Resource Development for  
Family and Consumer Sciences Teachers 2012-2013” \$2,780 \*

### **Sobol, Daniel Joseph**

National Park Service and Overmountain Victory Trail Association, “NPS  
Overmountain Victory Trail Association Graduate Student Support” \$6,000

## Kinesiology, Sport and Recreation Management (formerly KLSS)

### **Greene, Amy E**

Mountain States Health Alliance, “Fit Kids-Niswonger Children's Hospital  
2012-2013” \$17,400 \*

Mountain States Health Alliance, “MSHA Fit Kids -- Carter and Unicoi  
Counties” \$6,000 \*

Mountain States Health Alliance, “MSHA Fit Kids -- Unicoi County” \$6,000 \*

Mountain States Health Alliance, “MSHA Fit Kids - Carter County” \$6,000 \*

Mountain States Health Alliance, “MSHA Fit Kids -- Washington County  
2012-2013” \$5,000 \*

Washington County Department of Education, “Fit Kids -- Washington  
County” \$4,000 \*

## Teaching and Learning (formerly HDAL)

### **Chambers, Cynthia**

TN Council on Developmental Disabilities, “Turning Pages Together-Year 3” \$15,000 \*

### **Geiken, Rosemary**

TN Higher Education Commission, “STEM-Project SEE (Science in Early  
Elementary)” \$197,615 \*

International Association for Laboratory Schools, “Project CFITS (Coaching  
For Inquiry Teaching in Science)” \$2,000 \*

<b>Marks, Lori</b>	TN Department of Education, “ <i>Special Education Institute 2012-2015</i> ”	\$289,127	*
<b>Mims, Pamela</b>	Attainment Company, The, “ <i>Access: Language Arts</i> ”	\$44,238	*
<b>Stone, John</b>	Foundation Endowment, The, “ <i>Extending A Consumer-Friendly Consulting Network</i> ”	\$94,164	*

## College of Medicine

### Dean’s Office

<b>Wilgocki, Gregory</b>	TN Bureau of TennCare, “ <i>Graduate Medical Education 2012-2013</i> ”	\$8,369,600	*
	Medical Education Assistance Corporation, “ <i>To Provide Agreement for Services of Director of Billing Compliance</i> ”	\$97,500	*
	Medical Education Assistance Corporation, “ <i>To Provide Agreement - Services for Director of Managed Care</i> ”	\$16,070	

### Biomedical Sciences

<b>Ardell, Jeffrey</b>	National Institutes of Health, “ <i>Myocardial Ischemia Remodels the Cardiac Nervous System</i> ”	\$336,928	
	Cyberonics, Inc., “ <i>Acute and Chronic Evaluation of VNS for Treatment of Heart Failure</i> ”	\$204,122	
	American Heart Association - Greater Southeast Affiliate, “ <i>Health Science Fellowship in Neurocardiology</i> ”	\$13,500	
<b>Beaumont, Eric</b>	Cyberonics, Inc., “ <i>Efficacy of Vagal Nerve Stimulations (VNS) in Managing Heart Failure: Intrinsic Cardiac Nervous System as a Therapeutic Target of VNS</i> ”	\$61,500	*
	Cyberonics, Inc., “ <i>Acute and Chronic Evaluation of VNS for Treatment of Epilepsy</i> ”	\$129,628	*
<b>Ferslew, Kenneth</b>	Medical Education Assistance Corporation, “ <i>To Provide Agreement for Services of Toxicology Supervisor</i> ”	\$27,612	*
<b>Ordway, Gregory</b>	U.S. Department of Defense, “ <i>White Matter Glial Pathology in Autism</i> ”	\$90,462	*
<b>Schoborg, Robert V.</b>	National Institutes of Health, “ <i>Characterization of a Novel Host Pathway that Regulates Chlamydial Development</i> ”	\$376,837	
<b>Serrano, Moises A.</b>	National Institutes of Health, “ <i>Role of RPA Hyperphosphorylation in DNA Damage Responses</i> ”	\$31,460	

<b>Singh, Krishna</b>		
Veterans Affairs Medical Center, “ <i>IPA Agreement for Rebecca Steagall 2012-2013</i> ”	\$33,912	*
Veterans Affairs Medical Center, “ <i>IPA Agreement for Suman Dalal</i> ”	\$26,021	*
Veterans Affairs Medical Center, “ <i>IPA Agreement for Barbara Connelly</i> ”	\$19,400	*
Veterans Affairs Medical Center, “ <i>IPA Agreement for Rebecca Steagall Spring 2013</i> ”	\$11,303	*
<b>Southerland, E. Marie</b>		
Ithaca College, “ <i>Remodeling of the Guinea Pig Intrinsic Cardiac Plexus with Chronic Heart Disease</i> ”	\$45,000	
<b>Thewke, Douglas</b>		
National Institutes of Health, “ <i>Modulation of Atherosclerosis by Type 2 Cannabinoid Receptor</i> ”	\$116,252	*
<b>Zhu, Meng-Yang</b>		
Michael J. Fox Foundation for Parkinson's Research, The, “ <i>A Genetic Strategy to Restore Impaired Noradrenergic Function by Increasing Expression of Noradrenergic Phenotypes in the Locus Coeruleus in Parkinson's Disease Model Mice</i> ”	\$74,987	*
<b>Zou, Yue</b>		
University of Rhode Island, “ <i>Sequence Effects of Arylamine-DNA Adducts: Repair and Replication</i> ”	\$56,210	
<b><u>Continuing Medical Education</u></b>		
<b>Sucher, Barbara</b>		
Various Sponsors, “ <i>To Provide Agreement for Continuing Medical Education</i> ”	\$92,350	*
<b><u>Family Medicine</u></b>		
<b>Bailey, Beth</b>		
TN Department of Mental Health, “ <i>SBIRT TN: an SBIRT Model in Primary Care and Community Settings for High Risk Populations</i> ”	\$433,160	
TN Department of Health, “ <i>Health Promotion Education for Prenatal Professionals</i> ”	\$38,680	*
West Virginia Research Corporation, “ <i>Health Promotion Education for Prenatal Providers in Appalachia</i> ”	\$10,000	*
March of Dimes, “ <i>Self-Help Materials for Pregnant Smokers</i> ”	\$2,494	*
<b>Florence, Joseph</b>		
Health Resources and Services Administration, “ <i>Expanding Primary Care and Community Medicine to Third-Year Medical Students (PreDoc)</i> ”	\$172,651	
<b>Franko, John P.</b>		
TN Department of Health, “ <i>Primary Care Physician Services</i> ”	\$48,800	*
Medical Education Assistance Corporation, “ <i>To Provide Agreement - Services for ETSU/Regional Health Contract</i> ”	\$48,800	

<b>Tudiver, Fred</b>	National Institutes of Health, <i>“Instructional Modules to Improve Cancer Communication”</i>	\$307,082	
	Health Resources and Services Administration, <i>“Improving Quality of Care Through an Appalachian Practice-Based Research Network (AAU)”</i>	\$250,000	

**Internal Medicine**

<b>Elgazzar, Mohamed</b>	National Institutes of Health, <i>“TLR4-Dependent Reprogramming of Translation Regulates Acute Systemic Inflammation”</i>	\$118,748	
--------------------------	---	-----------	--

<b>Mehta, Jayantilal</b>	TN Department of Health, <i>“Physician Services for Tuberculosis Control”</i>	\$63,800	*
--------------------------	---	----------	---

<b>Moorman, Jonathan</b>	TN Department of Health, <i>“HIV/AIDS Center of Excellence: Care Management Services 2013-2014”</i>	\$258,000	*
--------------------------	---	-----------	---

<b>Smith, John K.</b>	Medical Education Assistance Corporation, <i>“To Provide Agreements for Department of Internal Medicine”</i>	\$197,165	*
	Medical Education Assistance Corporation, <i>“To Provide Agreement for the Services of Dr. Guangyu Li”</i>	\$73,000	*

<b>Yao, Zhi Q.</b>	National Institutes of Health, <i>“Tim-3-mediated IL-12 Dysregulation in Antiviral Immune Response to HCV Infection”</i>	\$306,436	
--------------------	--	-----------	--

<b>Yin, Deling</b>	National Institutes of Health, <i>“Role of Opioids Signaling in Immune Suppression”</i>	\$143,000	
	National Institutes of Health, <i>“Role of Toll-Like Receptor 4 Signaling in Stress-Induced Lymphocyte Apoptosis”</i>	\$107,066	

**Learning Resources**

<b>Wallace, Rick</b>	National Network of Libraries of Medicine, <i>“Community Technology Improvement Award”</i>	\$5,000	*
----------------------	--	---------	---

<b>Woodward, Nakia J.</b>	National Network of Libraries of Medicine, <i>“Helping Healers with Health Information”</i>	\$5,000	*
	National Network of Libraries of Medicine, <i>“Exhibit Award RAM March 9-10, 2013”</i>	\$790	*

**Obstetrics and Gynecology**

<b>Jernigan, Thomas W.</b>	Mountain States Health Alliance, <i>“To Provide Agreements for the Services of Dr. Selman Welt”</i>	\$91,000	*
----------------------------	---	----------	---



## **Pathology**

<b>ClineParhamovic, Karen</b> TN Department of Health, <i>"To Provide - State Medical Examiner"</i>	\$79,532	*
<b>Schweitzer, John</b> Upper East Tennessee Counties, <i>"Forensic Services for Upper East TN Counties 2012-2013"</i>	\$465,745	*
Medical Education Assistance Corporation, <i>"To Provide Agreement for the Services of a Cytotechnologist"</i>	\$21,585	*

## **Pediatrics**

<b>Kalwinsky, David</b> Medical Education Assistance Corporation, <i>"To Provide Agreements for the Department of Pediatrics"</i>	\$108,8271	*
<b>Klopfenstein, Katherine</b> TN Department of Health, <i>"State Hemophilia Program"</i>	\$20,500	
<b>Rary, Jack</b> TN Department of Health, <i>"Genetics Screening, Testing, Counseling, Education and Follow-up 2012-2013"</i>	\$249,300	*

## **Psychiatry and Behavioral Sciences**

<b>Cancellaro, Louis</b> ETSU Research Foundation, <i>"Agreement for Psychiatric Research Services"</i>	\$91,300	*
Medical Education Assistance Corporation, <i>"To Provide Agreements for the Department of Psychiatry"</i>	\$78,200	*
<b>Moore, Norman</b> Soterion Health Care Group, LLC, <i>"The Soterion Neuropsychiatric and Molecular Imaging Research Fellowship"</i>	\$90,536	
<b>Moser, Michele</b> TN Bureau of TennCare, <i>"Tenn Care Center of Excellence for Children in State Custody"</i>	\$454,788	
State of Tennessee, <i>"Teen Outreach Program (TOP) for the East Grand Region"</i>	\$33,509	

## **Quillen Chair of Geriatrics and Gerontology**

<b>Hamdy, Ronald</b> International Society for Clinical Densitometry, <i>"To Provide Agreement for Services of Staff for Journal of Clinical Densitometry"</i>	\$20,000	*
---	----------	---

## **Surgery**

<b>Browder, Isaac William</b> Medical Education Assistance Corporation, <i>"To Provide Agreements for the Department of Surgery"</i>	\$411,904	*
Medical Education Assistance Corporation, <i>"To Provide Agreement for Orthopedic Residency Coordinator"</i>	\$228,677	

<b>Li, Chuanfu</b>	National Institutes of Health, “ <i>Innate Immunity and Cardiovascular Function in Sepsis</i> ”	\$294,324
<b>Ozment-Skelton, Tammy</b>	American Heart Association - National, “ <i>The Class A Scavenger Receptor as a Mediator of Septic Shock</i> ”	\$77,000
<b>Williams, David</b>	National Institutes of Health, “ <i>Amelioration of Sepsis by Macrophage Activation</i> ”	\$277,029

## College of Nursing

### Dean’s Office

<b>Smith, Sheila</b>	TN Department of Health, “ <i>Physical Assessment Training</i> ”	\$47,500
	Foundation of the National Student Nurses Association, “ <i>Partnerships for BSN Completion: Next Steps</i> ”	\$15,000 *

### Center for Nursing Research

<b>Edwards, Joellen</b>	Veterans Affairs Medical Center, “ <i>Rural Health Professions Institute</i> ”	\$134,669 *
-------------------------	--	-------------

### Graduate Programs

<b>Hayes, Patricia</b>	Health Resources and Services Administration, “ <i>Primary care in public housing: Targeting health disparities in Appalachia</i> ”	\$276,599
<b>McConnell, Peggy</b>	University of Kentucky Research Foundation, “ <i>OVAR/GEC Inter-professional Healthcare Workforce Training for Aging</i> ”	\$101,380
<b>Rayman, Kathleen</b>	Health Resources and Services Administration, “ <i>Advanced Nursing Education: Expanding Access to Primary Care Nurse Practitioners in Appalachia</i> ”	\$360,720
	Health Resources and Services Administration, “ <i>Improving Accessibility of Doctoral Education in Nursing</i> ”	\$248,460
	Michal Child Development Center, “ <i>NP Services for the Michal Child Development Center 2012-2013</i> ”	\$46,112 *
	Frontier Health, Inc., “ <i>Frontier Psychiatric Nurse Practitioner Services 2013</i> ”	\$23,471 *
	Health Resources and Services Administration, “ <i>Nurse Faculty Loan Program 2012-2013</i> ”	\$20,094 *
<b>Rice, Judith</b>	TN Department of Mental Health, “ <i>PATH 2012-2013</i> ”	\$137,241 *
	Frontier Health, Inc., “ <i>Johnson City Downtown Clinic and Frontier Health 2012-2013</i> ”	\$15,000 *

## Office of Practice

### **Kappes, Betsy**

Health Resources and Services Administration, “*FOCUS: Family Nurse Practitioners Optimizing Care for the Underserved -- CHC Cluster 2013-2014*” \$1,317,093

Health Resources and Services Administration, “*FOCUS: Family Nurse Practitioners Optimizing Care for the Underserved -- CHC Cluster 2012-2013*” \$1,281,018

TN Department of Health, “*Healthcare Safety Net -- JCDC 2012-2013*” \$150,256 \*

Johnson City, TN, City of, “*Special Appropriations*” \$29,964 \*

TN Department of Health, “*Safety Net Primary Care Services for Uninsured Adults 19-64 Mountain City Extended Hours Health Center*” \$19,500 \*

### **Vanhook, Patricia**

Health Resources and Services Administration, “*Access for All: Meeting the Community Demand for Primary Care (HRSA-Affordable Care Act: Nurse Managed Health Clinics)*” \$399,496

### **Walls, Jennie**

Washington County Department of Education, “*Washington County School Health 2012-13*” \$99,533 \*

## College of Pharmacy

### Pharmaceutical Sciences

#### **Brown, Stacy D.**

United States Pharmacopeia, “*USP Monograph Development: Buprenorphine Veterinary Buccal Solution*” \$22,700 \*

#### **Walls, Zachary**

American Association of Colleges of Pharmacy, “*Listeriolysin O-Liposomes for the Treatment of Drug-Resistant Cancer*” \$9,994 \*

### Pharmacy Practice

#### **Lugo, Ralph A**

Mountain States Health Alliance, “*To Provide Agreement for Patient Assessment Resources*” \$294,621 \*

Clinical Management Concepts, Inc., “*To Provide Agreement for Patient Assessment Resources*” \$29,877 \*

# College of Public Health

## Dean's Office

### **Kidwell, Ginny**

National Networks of Public Health Institutes, *"Improving the Public's Health Through Strategic Partnerships and Action"* \$28,500 \*

### **Masters, Paula**

National Association of County and City Health Officials, *"Survive and Thrive Regional Center"* \$30,000

### **Pack, Robert P.**

Health Resources and Services Administration, *"Tennessee Long-Distance Internet Facilitated Educational Program for Applied Training in Health (LIFEPATH)"* \$650,000

National Institutes of Health, *"Inter-Professional communication to Prevent Prescription Drug Abuse in Appalachia"* \$472,501 \*

Health Resources and Services Administration, *"Public Health Traineeships"* \$5,588 \*

## Community and Behavioral Health

### **Hillhouse, Joel**

National Institutes of Health, *"An Appearance-Based Intervention to Reduce Teen Skin Cancer Risk-R01"* \$493,965

University of Massachusetts, *"GIS Mapping of Unsupervised Indoor Tanning and User Characteristics"* \$109,856 \*

National Institutes of Health, *"Research Supplement to Promote Diversity in Health-Related Research"* \$28,066

### **Slawson, Deborah L.**

National Institutes of Health, *"College Students as Facilitators to Reduce Adolescent Obesity Disparity in Southern Appalachia"* \$307,897

Appalachian Farmers Market Association, *"Cooking Demonstrations to Increase Students' Awareness of Local Food at the Farmers Market at East Tennessee State University"* \$250 \*

## Environmental Health

### **Scheuerman, Phillip**

Washington County, TN, *"MS4 Project: E.coli & Siltation for Specific Streams in the Nolichucky Watershed"* \$19,097 \*

Jonesborough, TN, Town of, *"E.coli and Water Chemistry Analysis, Little Limestone Creek, Jonesborough Town Limits 2013"* \$8,418 \*

Trout Unlimited, *"Dick Creek Brook Trout Restoration"* \$3,600 \*

**Health Sciences**

**Lampson, Bert**

University of Tennessee at Knoxville, "*Development of a Replicative Plasmid System to Enable Bioengineering Thermoxynochococcus Elongatus for Applied Photosynthesis*" \$10,725

**Health Services Management and Policy**

**Pendley, Robin**

Robert Wood Johnson Foundation, "*The Relationship Between Public Health Workforce Competency, Provision of Services, and Health Outcomes in Tennessee*" \$11,708 \*

University of Kentucky Research Foundation, "*Center of Excellence in Workforce Research and Policy Year 4*" \$10,155 \*

\* = new award



*The Office of Research and Sponsored Programs Administration  
East Tennessee State University*

*405 Ross Hall ☞ Box 70565*

*Johnson City, Tennessee 37614*

*Office: (423) 439-6052 ☞ Fax: (423) 439-6050*

*e-mail: [research@etsu.edu](mailto:research@etsu.edu) ☞ website: [www.etsu.edu/research/orspa.htm](http://www.etsu.edu/research/orspa.htm)*